

Adapted by Allison Gregory and Steven Dietz | Adapted from the book "Go, Dog. Go!" by P.D. Eastman

Illustration by P.D. Eastman from the book "Go, Dog. Go!"

Published by Random House Children's Books, a division of Random House, Inc.

Copyright © 1961 by P. D. Eastman, copyright renewed 1989 by Mary L. Eastman. All rights reserved.

Music Composed by Michael Koerner "Do You Like My Hat?" Lyrics by Michael Koerner

Directed by Rosemary Newcott

PRESENTING SPONSORS



WHITAKER
FOUNDATION

Produced by special arrangement with Plays for New Audiences

INTERACTIVE LEARNING GUIDE

This guide is for educators, parents, guardians, and caregivers. You name it – you can use it!

This guide is filled with activities and conversation starters that can be used before or after your visit to the theater. Whether you are an educator, parent, or caregiver, the materials inside have been curated to extend the experience with this show.

**FOR BEST USER EXPERIENCE DOWNLOAD
ACROBAT READER HERE**



Take a Look at What's Inside:

About the Author

About the Playwrights

About the Director

Classroom Activities

with Common Core, Missouri GLE, and National Core Arts Standards

Discussion Questions

Resources

SYNOPSIS

P.D. Eastman's classic children's book comes to life at the Big Top! Yellow Dog, Blue Dog, Red Dog and dogs of all colors, shapes, and sizes live in a magical world where dogs are king. See them work, play, eat, sing, dance, play musical instruments, swim, skate, ride bikes, drive cars, and go for a boat ride. They do it all! They snorkel. They howl at the moon. They ride a Ferris wheel. They celebrate their world with a big party in a tree. It's like a pop-up book that comes to life – and never stops.

ABOUT THE AUTHOR



Philip Dey Eastman



Philip Dey Eastman (1909 - 1986) was born in Amherst, Massachusetts. He studied at the National Academy of Design in New York City and worked as an assistant animator in the production design and story department at Walt Disney Studios starting in 1936.

In 1943, Eastman was enlisted in the Army and was assigned to the Signal Corps film unit, where Ted Geisel (more widely known as Dr. Seuss) was the head of his unit. He did picture planning for animated sequences in orientation and training films and was a writer and storyboard artist on the "Private Snafu" series for the *Army-Navy Screen Magazine*.

After Eastman left the Army, he began working as a writer and storyboard artist for children's books, comic books, and TV commercials. Throughout his career, Eastman helped develop beloved characters like Mr. Magoo. Ted Geisel invited Eastman to write for his new "Beginner Books" series at Random House. There, Eastman published his first children's book, *Sam and the Firefly*.

PHOTO SOURCE: PDEASTMANBOOKS.COM



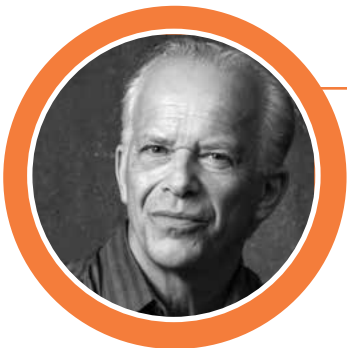
ABOUT THE PLAYWRIGHTS



Allison Gregory

Allison Gregory's plays range from historical satires centering on under-represented women to contemporary interpretations of mythology and fairytales to intimate dramas and children's theater. Allison's plays have been produced nationally and internationally by a fusion of professional theaters, academic stages, and non-traditional spaces. Her work includes *Not Medea* and *Wild Horses*, which were O'Neill Finalists and received multiple Rolling World Premieres through NNPN; *Motherland*, a reimagining of Brecht's *Mother Courage* for a diverse world, and *Trent's Last Case*, a fresh adaptation of a popular 1913 detective novel. Her plays for young audiences include *Peter and the Wolf*, which toured nationally; *Red Riding Hood*; *Ronia, the Robber's Daughter*, adapted from the Astrid Lindgren novel; *Junie B. in Jingle Bells*, *Batman Smells!*; *Junie B. is Not A Crook*; and *Junie B., Toothless Wonder* - all adapted from the beloved book series by Barbara Park. Allison has been recognized by TYA/USA as "One of the 10 Most Produced TYA Playwrights."

PHOTO SOURCE: ALLISONGREGGREGORYPLAYS.COM



Steven Dietz

Mr. Dietz's thirty-plus plays have been produced at regional theaters across the United States, as well as Off-Broadway. International productions of his work have been seen in England, Japan, Germany, France, Australia, Sweden, Russia, Slovenia, Argentina, Peru, Greece, Singapore, and South Africa. His recent plays include the widely-produced thriller, *Yankee Tavern*; the Steinberg Award finalist, *Becky's New Car*; the Pulitzer-nominated *Last of the Boys* (produced by Steppenwolf Theatre, Chicago); and the Edgar Award-winning *Sherlock Holmes: The Final Adventure* (from William Gillette and Arthur Conan Doyle). Steven's work as a director has been seen at many of America's leading regional theaters. He currently serves as a Dramatists Guild "Traveling Master"—teaching workshops in playwriting, storymaking, and collaboration across the country. He taught in the MFA Playwriting and Directing programs at the University of Texas at Austin from 2006-2018. Steven and his wife, Allison Gregory, divide their time between Austin and Seattle.

PHOTO SOURCE: PLAYSFORNEWAUDIENCES.ORG



ABOUT THE DIRECTOR



Rosemary Newcott



Rosemary Newcott spent 20 years as the Sally G. Tomlinson Artistic Director of Theatre for Youth and Families at Atlanta's Alliance Theatre. In addition to directing, and sometimes devising two TYA productions a season, Rosemary also mounted David Bell's lavish production of *A Christmas Carol*, featuring an all-Atlanta multi-cultural cast. Rosemary developed the Alliance's Palefsky HS Collision Project and created the thriving Kathy and Ken Bernhardt Theatre for the Very Young program.



On the national level, Rosemary has developed and directed two plays at New Visions New Voices: *Einstein is a Dummy* with Karen Zacarias and Deborah Wicks La Puma and Pearl Cleage's *Tell Me My Dream*. She also directed the premieres of Mo Willem's *Knuffle Bunny: A Cautionary Musical* and Laurie Brook's *Jason Invisible*—both at The Kennedy Center—and Zacarias' and La Puma's *Frida Libre* at La Jolla Playhouse. Post retirement, Rosemary devised and directed a new musical version of *Thumbelina* with Amanda Morgan and students at Kennesaw State University and directed the premiere of *Hans Christian Anderson* by Tim McDonald at Nashville Children's Theatre. Last season marked the debut of Pearl Cleage's *In My Granny's Garden* at the Alliance and here at Metro Theater Company. She is also consulting director for Funikijam World Music and Theatricals. Earlier in her career, Rosemary acted and directed in nearly every Atlanta theater company, starting her path at the Academy Theatre.

Rosemary is a recipient of a Princess Grace Foundation Fellowship and also a Princess Grace Special Project Award for her adaptation and direction of André Benjamin's *Class of 3,000 LIVE!* at the Alliance. She has received several Atlanta Suzi Awards for direction and the 2010 Spirit of Suzi Award. In 2018, she received the Suzi Lifetime Achievement Award and in 2019, the Harold Oaks Excellence in TYA award and the AATE Compton Bell Lifetime Achievement Award. She is a member of the adjudicator/workshop leader team at Atlanta's Junior Theatre Festival. Throughout her career, she has served as guest artist at Augusta College, Emory University, Georgia State University, Hartwick College, Oglethorpe University, University of West Georgia, and Kennesaw State University, as well as numerous high school programs, most notably as a 10-year theater director at the Georgia Governor's Honors Program. Rosemary has proudly served on the board of TYA/USA and is a member of AEA and SDC.

Rosemary is thrilled to be directing Metro Theater Company's production of *Go, Dog. Go!* for its 50th season. She is especially excited because this production is performed at The Big Top. Rosemary explains it "is so perfect for this show because the movement is inspired by European clowning technique." She says that in this show, we learn a lot about community and friendship and compassion, and in addition to that - it's about dogs!" Rosemary promises that "if you love dogs, you will love this play even more!"





CLASSROOM ACTIVITIES

Pass the Fabric

In *Go, Dog. Go!*, the dogs take turns playing. Now it's your turn to play and use your imagination! Gather students in a standing circle. Explain that when we use our imagination, items can be transformed into something new. Take turns passing a piece of fabric around the circle. When the fabric reaches you, you must transform it into a new item by showing with your body and gestures what the new item is. Encourage students to think outside the box!



“Play, dogs, play!”

Demonstrate to students by transforming the piece of fabric into leaves on a tree. You can do this by stretching tall and holding the fabric up in the air.

Optional: Try another round of this activity again with a hat! Pass Hattie's hat around the circle and see how it can transform! If you don't have a piece of fabric or a hat available, any item will do—this activity is all about the power of imagination!



MISSOURI EARLY LEARNING STANDARDS:
1. Approaches to Learning. C. Exhibit creativity.
2. Use imagination to generate a variety of ideas.

NATIONAL CORE ARTS STANDARDS: THEATRE ANCHOR STANDARD 3: Refine and complete artistic work. **TH:CR3.1.2. C.** Generate independently multiple representations of a single object in a guided drama experience (e.g., process drama, story drama, creative drama).



CLASSROOM ACTIVITIES



The Case of the Missing Words

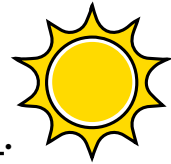
Use the word bank and pictures to fill in the blanks and complete the story!

WORD BANK: Hat, Sleep, Big Top, Tree, Yellow

I saw *Go, Dog. Go!* at the _____.



The sun came up, and it was _____.



This dog is wearing a _____.



I see a red dog sitting in the blue _____.

zzz



The dogs were so tired last night, so they went to _____.

MISSOURI LEARNING STANDARDS GRADE-LEVEL EXPECTATIONS K-5 ELA: (GRADE 1) 1. Develop and apply skills to the reading process. E. Determining what words mean from how they are used in context of a sentence either heard or read and cognitive exercises that can be used in a group setting for drama/theatre work.





CLASSROOM ACTIVITIES

Frozen Pictures

Explain to students that the dogs in *Go, Dog. Go!* perform many tasks throughout the show. Remind students to think back on the show. You may even review some of the tasks that the dogs perform in the play.

It is now their turn to play dogs like the ones they have just seen at the big top!

- Tell students that they will be making frozen pictures with their bodies, like statues.
- Remind students that statues don't speak, so students should use facial expressions and their body to show how they feel!
- Ask students to spread out in the space and go through the following prompts.
- After each prompt tell students to freeze, like a statue, comment on the gestures and facial expressions you see.
- You can invite students to unfreeze and observe one another's frozen pictures, too.

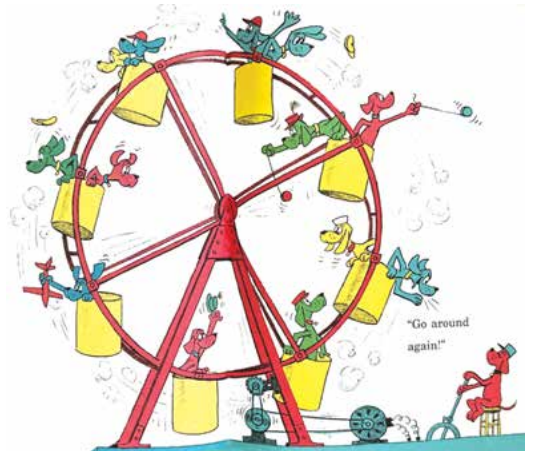
STUDENT PROMPTS:

1. The sun is up, and it is yellow! Show me how you feel in the morning!
2. Hattie just walked in, and you don't like her hat. Show me what that looks like.
3. It's time for work. Show me what you're working on.
4. Work is over! It's time to play! Play, dogs, play!
5. It's bedtime! Show me what you look like when you're super tired!
6. Hattie just walked in again and you love her hat! It's a party! Show me what you look like when you're having a good time!

REFLECTION QUESTIONS:



1. Show me what your favorite frozen picture was. Why was it your favorite?
2. How did you or a classmate use their body and/or facial expressions to show how they feel in the morning when the sun comes up?
 - a. How could you tell how they were feeling without using words?
3. What did our frozen pictures look like when the dogs were sleepy? When you're tired, how does your body feel?
4. The dogs loved to play! What is something that you enjoy doing?
 - a. How do you feel when you are doing something you love?



MISSOURI EARLY LEARNING STANDARDS:
SOCIAL EMOTIONAL DEVELOPMENT. 1. KNOWLEDGE OF SELF. B. Develop self-control. 3. Express feelings through appropriate gestures, action, and language.

NATIONAL CORE ARTS STANDARDS:
THEATRE ANCHOR STANDARD 7: Perceive and analyze artistic work. TH:RE7.1.PK. A. With prompting and support, recall an emotional response in dramatic play or a guided drama experience (e.g., process drama, story drama, creative drama).

THEATRE ANCHOR STANDARD 6: Convey meaning through the presentation of artistic work. TH:PR6.1.1. A. With prompting and support, use movement and gestures to communicate emotions in a guided drama experience (e.g., process drama, story drama, creative drama).

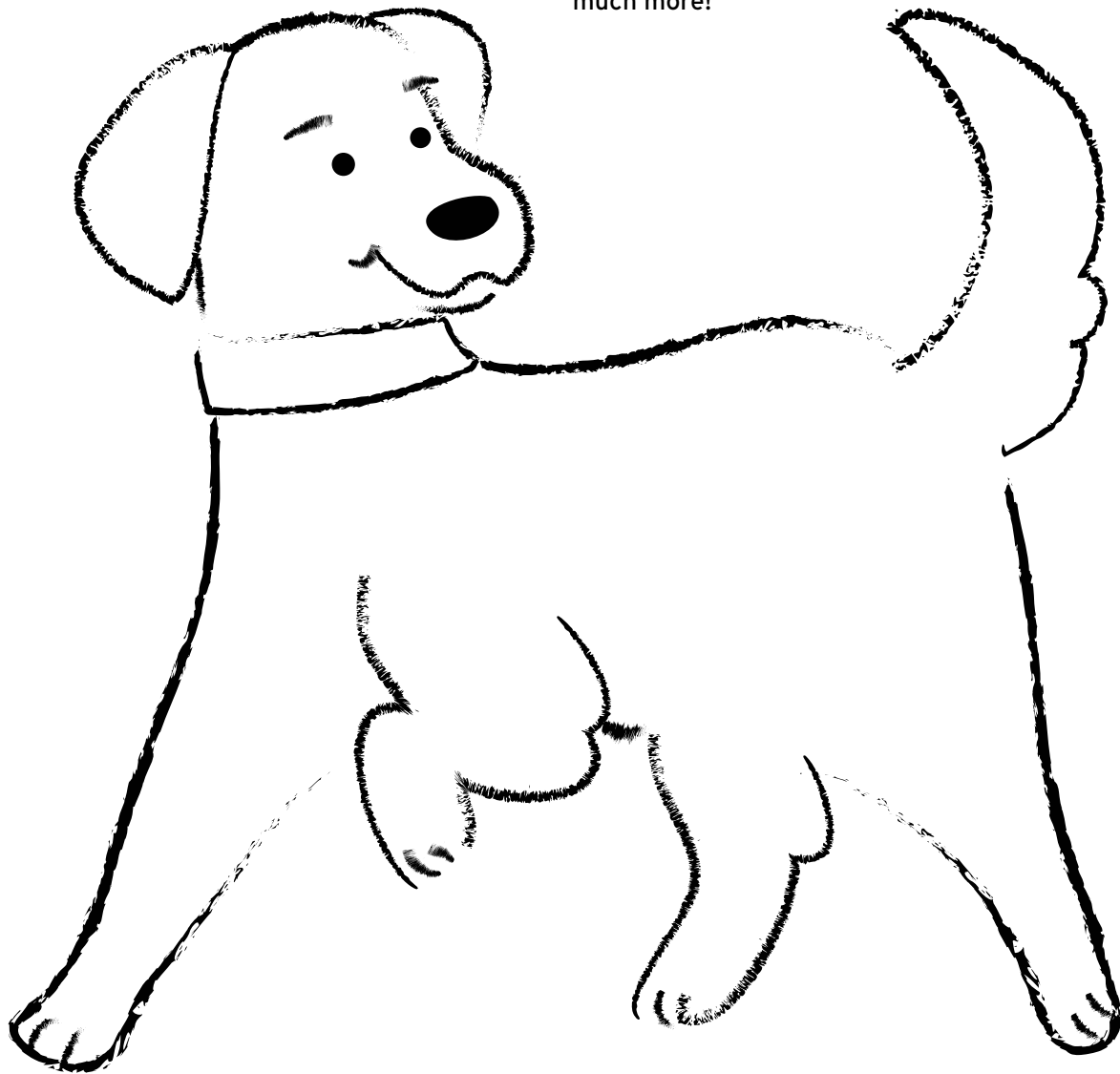


CLASSROOM ACTIVITIES



Who Let the Dogs Out?

The dogs in *Go, Dog. Go!* perform many tasks like working, playing, and sleeping. Color the dog below and ask a grown-up to help you cut it out. Now it's time to take your dog out for an adventure! Together, you can go on a walk, read, play, and so much more!



WE'RE NOT SO DIFFERENT: Five Ways that Humans and Dogs are Alike

- 1 A dog's nose print is unique, like a person's fingerprint.
- 2 Dogs have dreams when they sleep.
- 3 Dogs have a sense of time. Dogs can learn their daily routines and know when it's time to take a walk or when their person is coming home.
- 4 Dogs are social and like to spend time with their people like we enjoy spending time with friends and family.
- 5 Dogs have personal preferences. Just like us, dogs have favorite foods, toys, and even people.



CLASSROOM ACTIVITIES



Who Let the Dogs Out?

Record your adventure in the journal entry and draw a picture of what you and your dog did together. You can also ask a grown-up to help you take a picture of you and your dog on your adventure!

POST
your pictures
on social media and
tag @metroplays
so we can see your
adventures!

OPTIONAL:
Show and tell!
Students may take
turns sharing their
experiences with
their pets
in class.

**MISSOURI LEARNING STANDARDS
GRADE-LEVEL EXPECTATIONS
K-5 ELA: (GRADE K) 1.** Apply a writing process to develop a text for audience and purpose. **A.** Follow a writing process, with assistance, to generate a writing plan through: **a.** using pictures, oral language or written letters, and/or words

MISSOURI LEARNING STANDARDS GRADE-LEVEL EXPECTATIONS K-5 ELA: (GRADE K) 4. Speak effectively when presenting. Speak, using conventions of language when presenting individually or with a group by: **a.** describing personal experiences using a prop, picture, or other visual aid



CLASSROOM ACTIVITIES



Do You Like My Hat?

Our friend, Hattie, needs a hat for the party tonight! Design and color a hat that will have the other dogs giving a round of a-paws!





DISCUSSION QUESTIONS

1

In *Go, Dog. Go!*, we see dogs of all shapes and sizes. We see small dogs and big dogs, yellow dogs, and blue dogs, and so much more! Which dog was your favorite and why?

2

Which dog from the play would you most like to meet and why?

3

Theater performances can take place in many environments, like on a stage, a Blackbox, or even a park. What did you think about the show being in The Big Top?

4

How do you think Hattie felt when MC Dog did not like her hat?

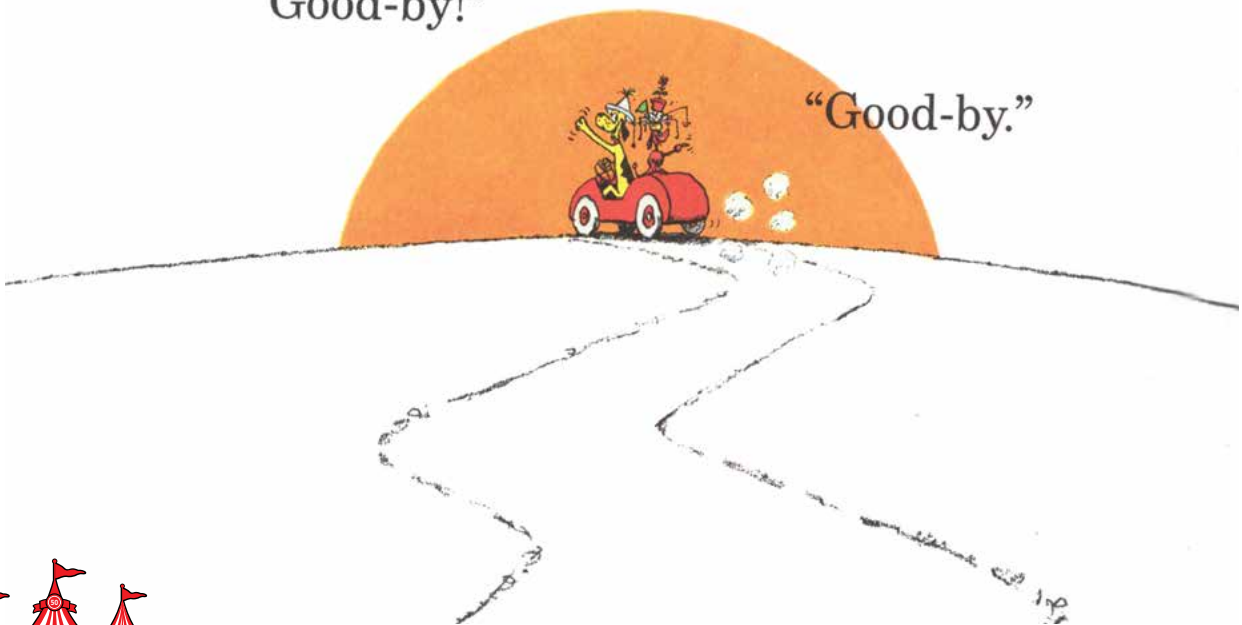
- How could you tell that Hattie felt that way?
- How did Hattie feel when MC Dog did like her hat? What was the difference?

5

The dogs like to play together, what games do you like to play?

“Good-by!”

“Good-by.”



RESOURCES FOR READERS AND EDUCATORS



Read to Dogs!

Duo Dogs Paws for Reading
duodogs.org/services/paws-for-reading

Champ Partners for Literacy
champdogs.org/therapy-dog-program/
champ-partners-for-literacy

Local Animal Shelters

Stray Rescue of St. Louis
strayrescue.org

CARE STL Adoption Center
icarestl.org

Humane Society of Missouri
hsmo.org

STL Lost Pets
stllostpets.org

St. Louis Circus Opportunities

Circus Flora (Events, volunteer opportunities)
circusflora.org

Circus Harmony (Events, classes)
circusharmony.org

Early Literacy

I Can Read! (Books, activities, reading tips)
icanread.com

Sesame Street (Videos, songs, rhymes, games)
sesamestreet.org/parents/learning-areas/literacy

Storyline Online (Celebrity read-aloud videos, story-related activity guides)
storylineonline.net

Local Library Opportunities for Young People

St. Louis Public Library
spl.org/kid

St. Louis County Library
slcl.org/kids

Kirkwood Public Library
kirkwoodpubliclibrary.org/children

Maplewood Public Library
maplewoodpubliclibrary.org/kids-teens/younger-kids

Other Books by P.D. Eastman

- *Are You My Mother?*
- *The Beginner Book Dictionary*
- *Everything Happens to Aaron!*
- *The Best Nest*
- *Flap Your Wings*
- *Big Dog...Little Dog*
- *The Alphabet Book*
- *What Time Is It?*
- *Snow*

3311 Washington Ave. | St. Louis, Missouri 63103

P: 314.932.7414 **F:** 314.932.7434

MISSION STATEMENT

Inspired by the intelligence and emotional wisdom of young people, we create professional theater, foster inclusive community, and nurture meaningful learning through the arts.

@MetroPlays

@metroplays

@MetroTheater

Metro Theater Company

@MetroTheaterCompany

metroplays.org

GO, DOG. GO! SPONSORED BY



WHITAKER
FOUNDATION

LEAD SEASON SUPPORT PROVIDED BY



Go, Dog. Go! illustrations by P.D. Eastman. From the book *Go, Dog. Go!* Copyright © 1961 by P.D. Eastman, copyright renewed 1989 by Mary L. Eastman